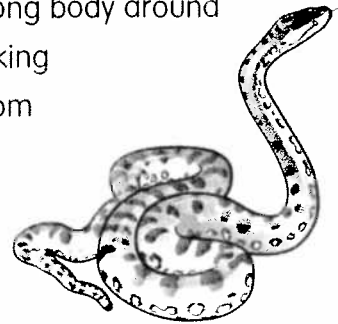


Ruler of the Rivers

The anaconda glides silently through dark waters, ready to **strike** at unsuspecting prey. This snake is massive, but you probably won't see it. The bulk of its body lies hidden beneath the surface of the river, its nostrils the only sign of its presence. The anaconda may not be the longest snake on **record**, but it is certainly the largest. An anaconda can weigh as much as 550 pounds. Anacondas are so big that they are known to dine on deer, small crocodiles, and, in rare cases, people! Don't worry, though. Most anacondas live deep within the rain forests of South America—farther than most people ever **venture**.

How can anacondas grow so big? Anacondas are part of the boa family. Boas are big snakes, but most are slender. They have to be **lean** in order to climb trees. Anacondas, however, usually live in water. Scientists think that anacondas can grow to be enormous because the water can support their large size.

If you ever come across an anaconda, it's best not to get too **close**. They have a striking distance of up to 25 feet! In the wild, this helps the anaconda hunt large, fast animals. The anaconda strikes quickly, sinking its teeth into its prey and wrapping its strong body around the animal. As the anaconda holds on, it squeezes out every bit of air, making it impossible for its prey to breathe. The animal dies from suffocation or from bleeding caused by crushed bones. This isn't a pretty way to die, but the anaconda has mastered this hunting method to perfection. The anaconda has nothing to fear from other animals. With its giant size and **stealthy** habits, the anaconda easily **rules** the rivers of the rain forest.



MONDAY

Choose the definition that matches the bold word in the sentence.

- The anaconda is ready to **strike** at its prey.
Ⓐ to hit forcefully Ⓑ to stop working in protest
- The anaconda is not the longest snake on **record**.
Ⓐ a collection of known facts Ⓑ a flat disc on which sound is recorded
- The anaconda's **stealthy** habits help it surprise its prey.
Ⓐ quiet and sneaky Ⓑ dishonest
- Most boas are **lean** so they can climb trees.
Ⓐ to rest on or against something Ⓑ having little to no fat
- It is best not to get **close** to an anaconda.
Ⓐ to shut Ⓑ near
- The anaconda **rules** the rivers of the rain forest.
Ⓐ laws or regulations Ⓑ to have control over

TUESDAY

Why are anacondas bigger than other boas? Provide details from the passage to support your answer.

WEDNESDAY

Choose the correct answer.

- What was the author's purpose in writing this passage?

(A) to frighten	(C) to entertain
(B) to inform	(D) to persuade
- Which of these is not a way that anacondas kill their prey?

(A) poisoning with venom	(C) suffocating
(B) crushing bones	(D) none of the above
- What does **venture** mean in this passage?

(A) to sleep	(C) to read
(B) to hunt	(D) to travel

THURSDAY

Write M if the sentence is the main idea. Write D if it's a detail. Write X if the information is not in the passage.

- _____ Anacondas can weigh as much as 550 pounds.
- _____ Anacondas are hard to see in the tree branches where they hide.
- _____ Anacondas strike quickly.
- _____ Anacondas are large, dangerous snakes.
- _____ Anacondas squeeze their prey to death.

FRIDAY

Pet anacondas have escaped into the swamps of Florida. Research this topic and explain why it is a problem.
